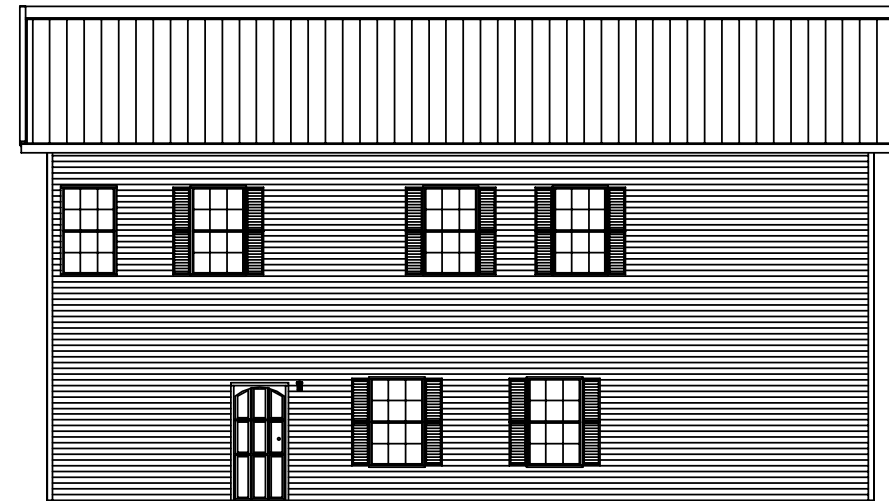




FRONT SIDEWALL ELEVATION




LEFT ENDWALL ELEVATION

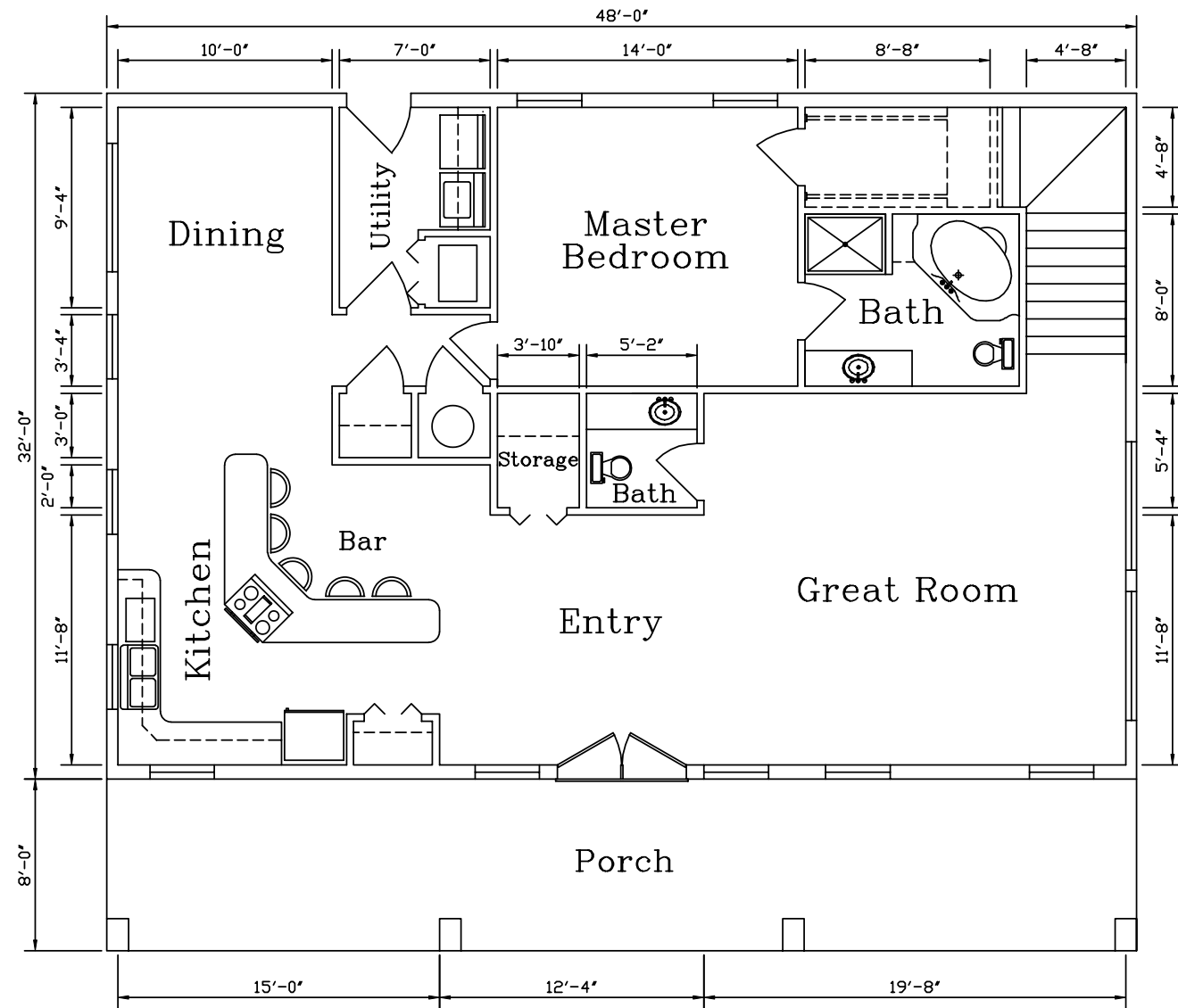


BACK SIDEWALL ELEVATION




RIGHT ENDWALL ELEVATION

REVISIONS					 <b>KODIAK STEEL HOMES</b> Kodiak Steel Homes, Inc 7301 Industry Drive North Little Rock, AR 72117	
NO.	DATE	DESCRIPTION	BY	CK'D	DESCRIPTION:	ELEVATIONS
					STYLE: SAVANNAH 1	SIZE: 32'-0" X 48'-0"
					DRN. BY: EAP	CK'D BY: HDS
					DATE: 04/03	SCALE: NTS
					CODE: SV1	SHEET NO. A1 OF 10
						REV. #



EXTERIOR FLOOR PLAN WINDOW AMOUNT = 13  
 EXTERIOR FLOOR PLAN DOOR AMOUNT = 3

REVISIONS					
NO.	DATE	DESCRIPTION	BY	CK'D	

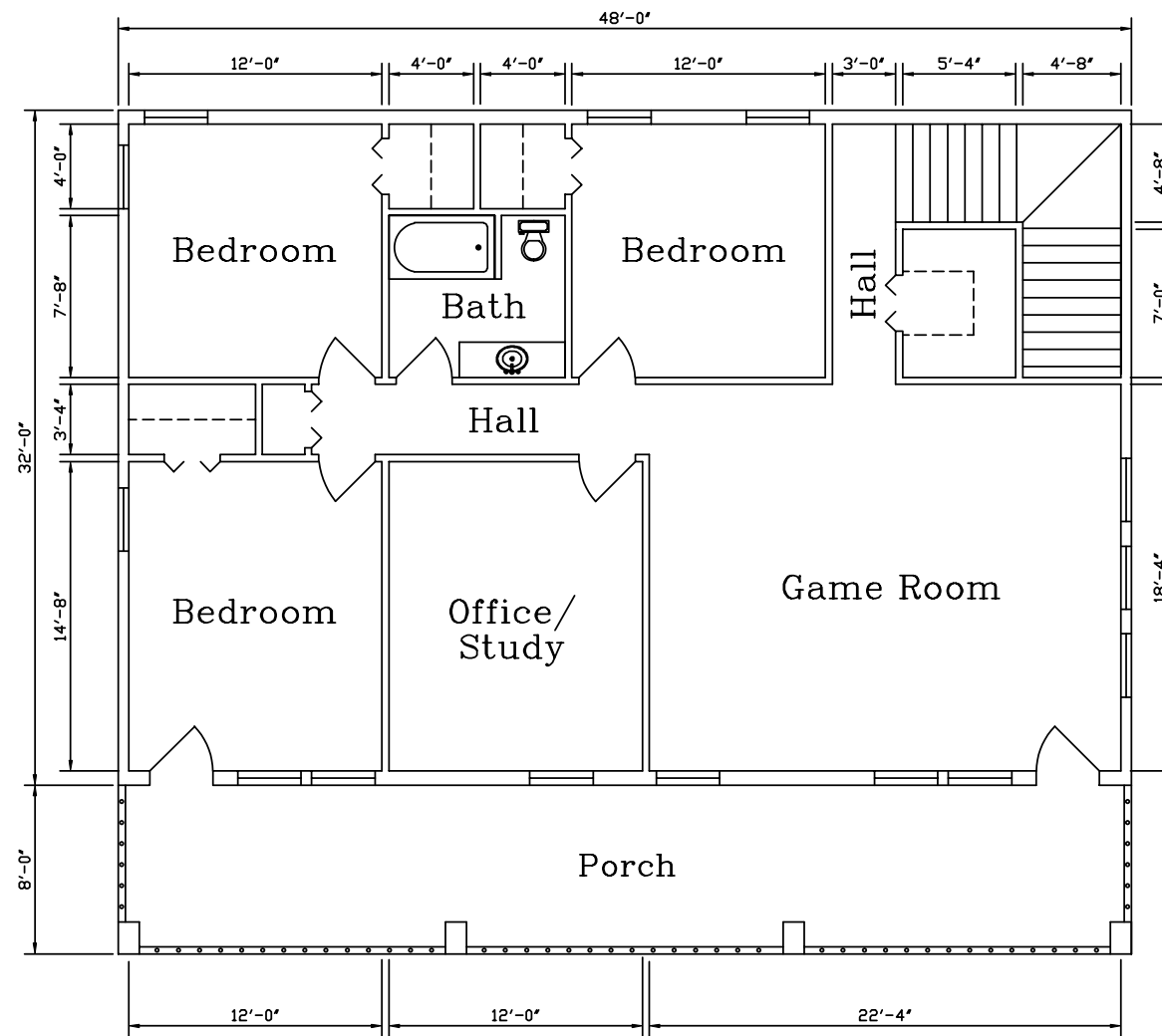


**KODIAK STEEL HOMES**  
 Kodiak Steel Homes, Inc  
 7301 Industry Drive  
 North Little Rock, AR 72117

DESCRIPTION: LOWER FLOORPLAN

STYLE: SAVANNAH 1      SIZE: 32'-0" X 48'-0"

DRN. BY	CK'D BY	DATE	SCALE	CODE	SHEET NO.	REV. #
EAP	HDS	04/03	NTS	SV1	A2 OF 10	



EXTERIOR FLOOR PLAN WINDOW AMOUNT = 14  
 EXTERIOR FLOOR PLAN DOOR AMOUNT = 2

REVISIONS						
NO.	DATE	DESCRIPTION	BY	CK'D		

**KODIAK STEEL HOMES**

Kodiak Steel Homes, Inc  
 7301 Industry Drive  
 North Little Rock, AR 72117

DESCRIPTION: UPPER FLOORPLAN

STYLE: SAVANNAH 1      SIZE: 32'-0" X 48'-0"

DRN. BY	CK'D BY	DATE	SCALE	CODE	SHEET NO.	REV. #
EAP	HDS	04/03	NTS	SV1	A3 OF 10	